

# RESUMING OPERATIONS

Cleaning and disinfection guidance  
for commercial facilities to  
safeguard employees and  
customers/visitors against COVID-19



# RESUMING OPERATIONS IN A COVID-19 ERA

In these unprecedented times, many businesses that previously suspended operations partially or fully to comply with government regulation or due to operational disruption are reopening. **This guidance is intended to help you safely clean and disinfect your property as part of your reopening process.**

Every operation will need to follow internal protocols and may need to take additional steps outside of these recommendations. Refer to equipment manufacturer's instructions for restarting any non-ProGuard equipment.

Prior to reopening, refer to ProGuards's Reopening Checklist.

Contact your ProGuard Representative for any additional support you may require during this reopening phase.



## PREPARE FOR RESUMING OPERATIONS

### Introduction .....2

### Resuming Operations Preparation .....5

- Understanding Risk Factors
- Focus on Personal + Environmental Hygiene
- Implement Enhanced Hygiene
- Prepare for Resuming Operations

### Safeguard Employees .....10

- Develop Plan to Safeguard Employees
- Promote Infection Prevention
- Promote Proper Hand Hygiene
- Frequency of Hand Hygiene

### Ensuring Environmental Hygiene .....15

- The “New” Normal
- Determine Frequency of Cleaning and Disinfection
- Disinfecting Non-Food Contact Surfaces
- Disinfecting Food Contact Surfaces
- Cleaning Soft (Porous) Surfaces

## CLEANING PROCEDURES

### Employee Breakroom: General Instructions .....21

### Public Areas: General Instructions .....23

- Entrance, Lobby and Hallways
- Transportation: Shuttles/Buses, Trains, Cars, etc.
- Elevators
- Conference Rooms and Office Spaces
- Gym / Fitness Areas
- Swimming Pools and Whirlpool Spas
- Recreational Equipment
- Water Fountain
- Grab & Go / Self-Service Area
- Childcare Facility
- Floor Care – Mopping
- Carpet Care – Vacuuming
- Ice Machines
- Trash and Recycling Collection
- Loading Dock / Receiving Area
- Inspection Checklist



CLEANING PROCEDURES

Foodservice (Cafeteria / Dining Areas): General Instructions .....40

- [Tabletops / Countertops](#)
- [Chairs, Stools and Seats](#)
- [Cafeteria Serving Line / Salad Bars](#)
- [Marketplace or Coffee / Gift Shop](#)
- [Inspection Checklist](#)

Foodservice (Kitchen): General Instructions .....46

- [Dishmachine – Readyng for Operation](#)
- [Manual Warewashing](#)
- [Flatware](#)
- [Plates and Tableware](#)
- [Prepware: Pots, Pans and Cookware](#)
- [Reach-In Refrigerator and Freezer](#)
- [Walk-In Refrigerator and Freezer](#)
- [Dry Storage](#)
- [Ice Machines](#)
- [Beverage Machine](#)
- [Stainless Steel Sink](#)
- [Walls](#)
- [Storage/Delivery Cart and Dish Caddy](#)
- [Inspection Checklist](#)

CLEANING PROCEDURES

Restrooms: General Instructions .....61

- [Countertops, Vanity and Sinks](#)
- [Mirrors and Glass Surfaces](#)
- [Toilets and Urinals](#)
- [Partitions and Walls](#)
- [Floor](#)
- [Inspection Checklist](#)

Laundry: General Instructions .....69

- [Industrial / Homestyle Laundry Area Cleaning](#)
- [Laundry Washing](#)
- [Inspection Checklist](#)

PROGUARD RESOURCES





# PREPARE FOR RESUMING OPERATIONS



# UNDERSTANDING RISK FACTORS

## HOW NOVEL CORONAVIRUS ENTERS



**EMPLOYEES**



**GUESTS AND CUSTOMERS**

## HOW NOVEL CORONAVIRUS SPREADS



### **NOVEL CORONAVIRUS IS SPREAD BY DROPLETS**

MADE WHEN INFECTED PEOPLE COUGH, SNEEZE OR TALK<sup>1</sup>



### **TOUCHING CONTAMINATED PEOPLE, OBJECTS OR SURFACES**

THEN TOUCHING YOUR EYES, NOSE OR MOUTH

<sup>1</sup><https://www.cdc.gov/coronavirus/2019-ncov/faq.html>

# FOCUS ON PERSONAL + ENVIRONMENTAL HYGIENE



# IMPLEMENT ENHANCED HYGIENE

**TAKE ACTION** ➤ Public health recommendations focus on **standard infection control practices, training and compliance.**



## PERSONAL HYGIENE

**Wash hands frequently** with soap and water. When soap and water aren't available, use an alcohol-based hand sanitizer.

**Minimize close contact** with people who have symptoms of respiratory illness.

**Ensure proper use** of personal protective equipment (PPE) where appropriate.



## ENVIRONMENTAL HYGIENE

**Clean and disinfect** surfaces and high-touch objects with approved disinfectants.



# PREPARE FOR RESUMING OPERATIONS

➤ Consider dedicating a shift to extensive cleaning and disinfection to ensure a safe return to operation for employees and customers/visitors. Special attention should be paid to high-touch surfaces including (but not limited to) those listed below.



## Conference Rooms / Office Spaces

- Door handles
- Tables and chairs
- Desks
- Furniture knobs and handles
- Light switches and thermostat
- Chalkboard/whiteboard
- Window-shade pulls
- Public telephone/computer and keypad
- A/V Controls
- Trash and recycling receptacles
- Telephone/polycom



## Cafeteria / Dining Areas

- Door handles and push plates
- Tables, chairs (including armrests) and booths
- Ordering and payment counters
- Beverage and condiment stations
- Hand railings
- Tray and utensil pickup areas
- Grab & go/beverage cases (including handles)
- Trash and recycling receptacles



## Kitchen

- Kitchen equipment handles and push plates
- Operating buttons for all equipment
- Dispenser handles (i.e., beverage machine)
- Handles for refrigerators and freezers
- Sink faucets
- Towel and soap dispensers
- Trash and recycling receptacles
- Cleaning tools
- Computers and keypads



## Restrooms

- Door handles
- Faucets & toilet/urinal handles
- Seat covers
- Stall latches
- Toilet paper dispenser
- Sanitary receptacle
- Countertops
- Towel and soap dispensers
- Baby changing station
- Sharps container
- Trash and recycling receptacles



## SAFEGUARD EMPLOYEES

# DEVELOP PLAN TO SAFEGUARD EMPLOYEES

- ✓ Determine if there are an adequate number of trained employees to staff each area of operation during normal working hours. Develop a business continuity plan if not fully-staffed.
- ✓ Educate employees on symptoms of COVID-19.
- ✓ Closely monitor employee health and have symptomatic employees stay home in accordance with company illness policy.
- ✓ Emphasize the need to self-quarantine and contact employer if they've been exposed to someone confirmed to have COVID-19.
- ✓ Reinforce personal hygiene, cough etiquette and social distancing (as recommended by local and federal public health authorities).
- ✓ Provide hygiene materials such as tissues, hand soap and sanitizer.
- ✓ Have employees disinfect all personal hard, non-porous surfaces according to the directions for use on the product label.
- ✓ Inform employees of pandemic status and proper infection control procedures.
- ✓ Develop policies for worker protection and provide training on proper product use and how to read a Safety Data Sheet (SDS) to all cleaning staff.



# PROMOTE INFECTION PREVENTION

Reduce the risk of transmission by >>



Washing your hands often and correctly.



Thoroughly cleaning and disinfecting personal items.



Covering your mouth and nose when coughing or sneezing.



Staying home while you are sick.



Avoiding close contact with potentially infected individuals.

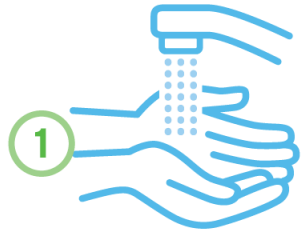


Contacting a doctor immediately in the event of symptoms.



# PROMOTE PROPER HAND HYGIENE

**HAND HYGIENE** >> Hands are a primary mode of transmission so hygiene must be judiciously implemented.



## WET

hands with clean running water, turn off the tap and apply soap.



## LATHER

the back of hands, between fingers and under nails.



## SCRUB

for at least 20 seconds.



## RINSE

hands well under clean running water.



## DRY

hands using a clean towel or air dryer. If available, use a towel to turn off tap.



**IF SOAP AND WATER ARE NOT AVAILABLE,**  
use an alcohol-based hand sanitizer.

- Use sufficient product to wet entire hand.
- Rub onto all surfaces of the hands for 30 seconds.
- Let air dry. DO NOT RINSE.

# FREQUENCY OF HAND HYGIENE



## When should I wash my hands?

- After blowing nose, coughing or sneezing
- After using the restroom
- Before, during and after food preparation
- Before eating
- After contact with animals or pets
- Before and after cleaning and disinfection
- After contact with high-touch surfaces in the facility
- After removing PPE
- Before and after providing routine care for a guest who needs assistance
- When they appear dirty

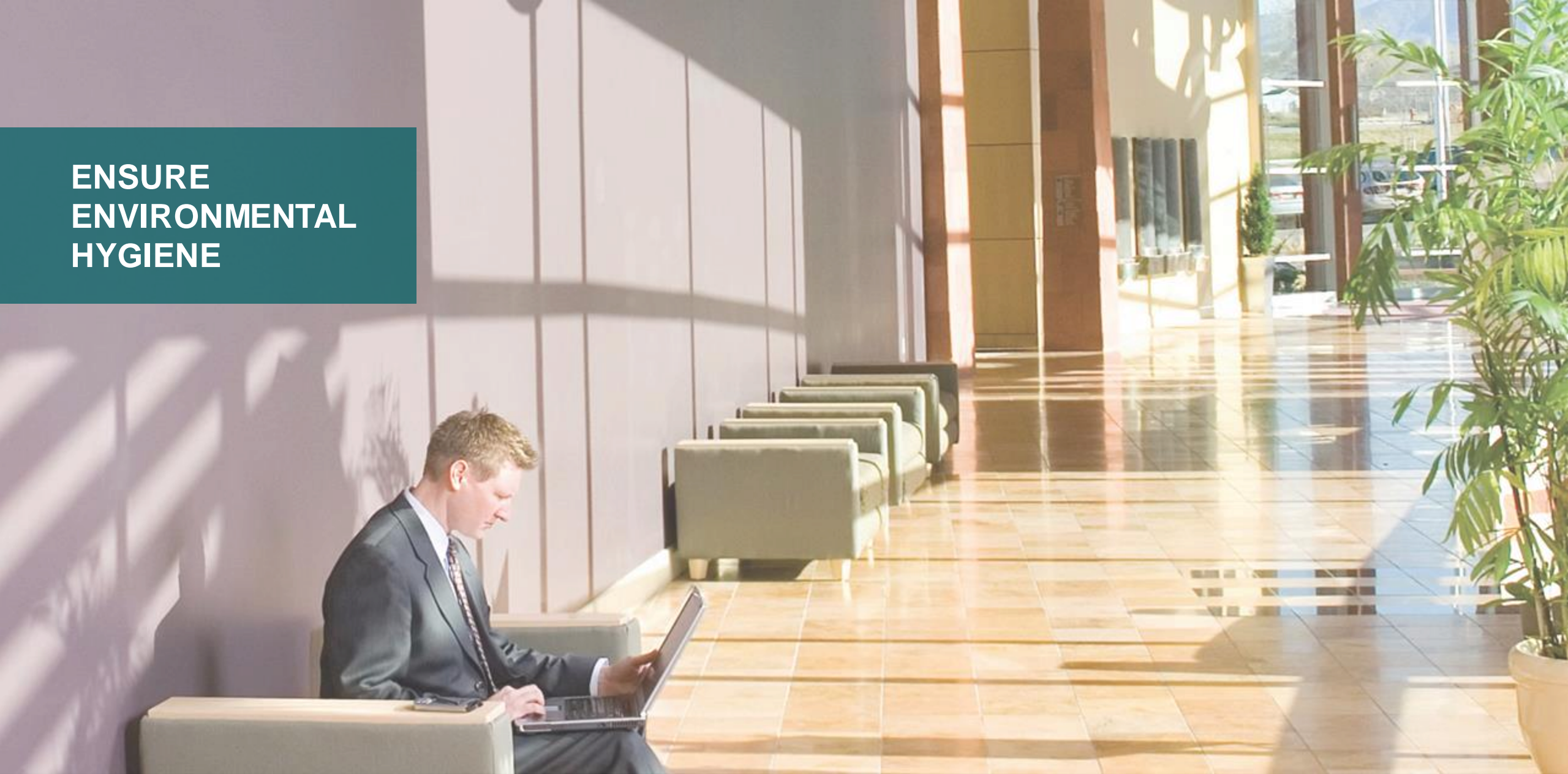


## Employer Responsibility:

- Ensures availability of hand soap and hand sanitizer.
- Trains and reinforces proper hand hygiene.



# ENSURE ENVIRONMENTAL HYGIENE





# THE “NEW” NORMAL

## Enhanced cleaning and disinfection for your operation

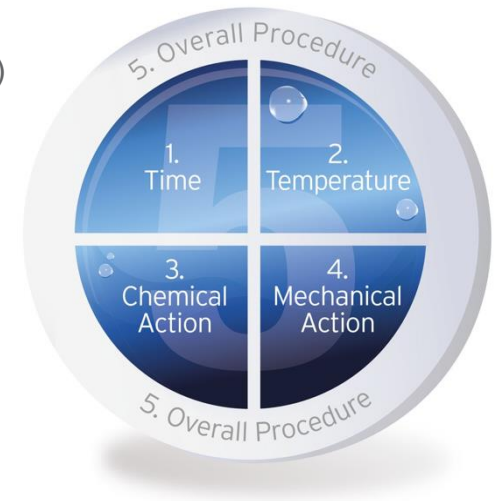


As your partner in sanitation, ProGuard prides itself on establishing best practices for cleaning throughout your operation. Now more than ever, it is critical that employees understand and explicitly follow proper cleaning and disinfection procedures.

Consider:

- Selecting the proper solution(s) for the job (i.e., product, tool and application method)
- The importance of contact time to achieve disinfection
- Increasing frequency of cleaning and disinfection as infection risk, foot traffic and soil load increases
- Increased awareness of safety considerations (disposable PPE, etc.)

The following guidance reinforces the importance of the **5 Factors of Clean**, particularly **overall procedures**, to ensure you can return to operation quickly and with piece of mind that you've done everything you can to protect your employees and guests.





# DETERMINE FREQUENCY OF CLEANING AND DISINFECTION

*As infection risk, foot traffic or soil load increase, frequency of cleaning and disinfection should also increase.*



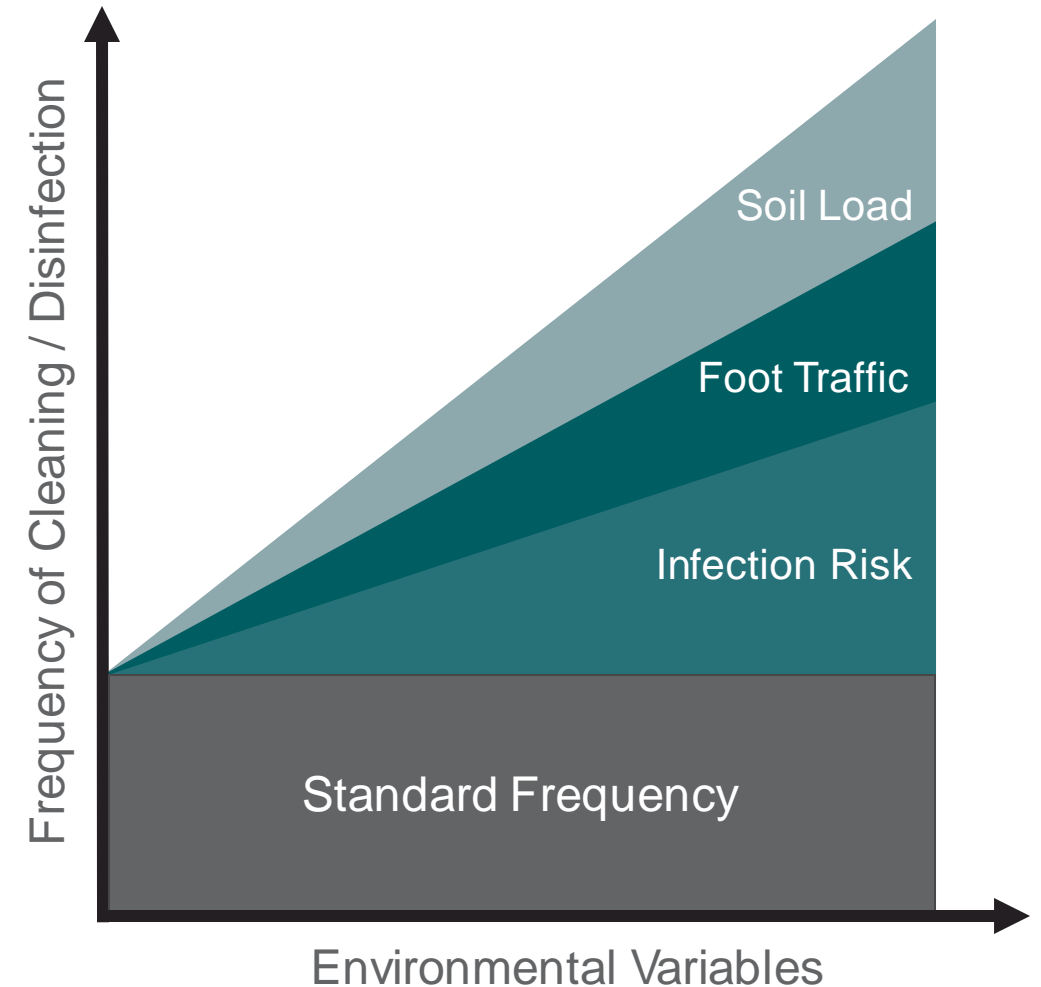
Many variables should be considered when determining frequency of cleaning and disinfection in each area of your operation including:

- Infection Risk
- Foot Traffic
- Soil Load

Other considerations (including but not limited to):

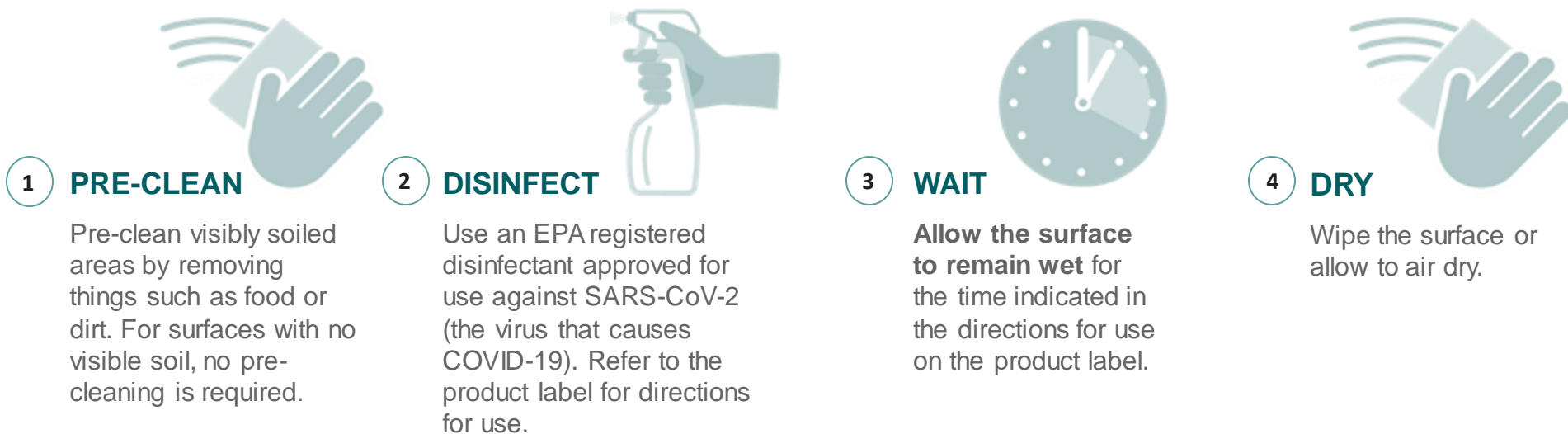
- Product Type
- Soil Type
- Surface Type

*Frequency should be determined at the unit level and re-evaluated as environmental variables change.*



# ENSURE ENVIRONMENTAL HYGIENE

## DISINFECTING NON-FOOD CONTACT SURFACES



Contact your ProGuard Representative or refer to EPA's [List N: Disinfectants for use against SARS-CoV-2](#) for approved products.

# ENSURE ENVIRONMENTAL HYGIENE

## DISINFECTING FOOD CONTACT SURFACES *DURING AN OUTBREAK*



Contact your ProGuard Representative or refer to EPA's [List N: Disinfectants for use against SARS-CoV-2](#) for approved products.

# CLEANING SOFT (POROUS) SURFACES

» For soft-surfaces such as upholstered furniture, carpeted floor, rugs and drapes, etc.



Remove visible contamination (if present) and **clean the surface using soap and water** or with cleaners appropriate for use on these surfaces.\* Ensure products are spot-tested in an inconspicuous location before application.



**Laundry items** (if possible) according to the manufacturer's instructions. Ensure items are dried completely.



**Vacuum as usual.**





# EMPLOYEE BREAKROOM

## General Instructions

### What products do you need?

- Multi-Purpose Disinfectant
- Food Contact Sanitizer
- Floor Cleaner
- Hand Soap
- Hand Sanitizer

### What tools do you need?

Refillable spray bottles, trigger sprayers, sanitizer pail, microfiber cloths, putty knife, vacuum, dust pan/broom, mop/bucket, window scrubber/squeegee, 'Wet Floor' sign, gloves, PPE



Cleaning & Disinfection Frequency\_\_\_\_\_

Inspection Frequency\_\_\_\_\_

Responsible\_\_\_\_\_

Required PPE\*\_\_\_\_\_

\*in addition to any required by SDS

### Specific touchpoints

- Doorknobs
- Public phones
- Public computers
- Light switches
- Chair armrests
- Faucet
- Cupboard/drawer handles
- Refrigerator and microwave handles
- Tables



To help protect against COVID-19, ensure treated surfaces remain wet for contact time indicated on product label.

*\*Refer to product label for use directions*

# EMPLOYEE BREAKROOM

## General Instructions



## Cleaning and disinfection guidelines

\*Refer to product labels for complete directions for use.

1. Wearing gloves, pick up debris from countertops, tables and floor.
2. Empty trash cans and recycling bins making sure to securely tie-off full bags for transport. Clean and disinfect the outside of trash cans using **multi-purpose disinfectant**. Replace liners.
3. Disinfect all hard, non-porous surfaces including countertops, refrigerator/cupboard handles and doorknobs with **multi-purpose disinfectant**. Pay special attention to high-touch surfaces and ensure properly wetted. **Ensure treated surfaces remain wet for contact time indicated on product label**.
4. Clean and disinfect inside/outside of microwave and outside of coffee maker using **multi-purpose disinfectant**.
5. Ensure food contact surfaces such as tables are rinsed with potable water and sanitized with **food contact sanitizer**. Allow for complete dwell time and do not wipe.
6. Restock paper products and **hand soap/hand sanitizer** dispensers as needed. Disinfect exterior of dispensers with **multi-purpose disinfectant** (including pump).
7. Place 'Wet Floor' sign at entrance. Vacuum carpet and vacuum or sweep then mop hard-surfaced floors with **floor cleaner** (tile, wood or LVT).
8. Inspect work.



## Specific touchpoints

**Food Contact:** Tables, food prep surfaces, eating utensils, dishes, etc.

**Non-Food Contact:** Doorknobs, light switches, faucets, cupboard and drawer handles, public phones and computers, chair armrests, etc.

# PUBLIC AREAS

## General Instructions

### What products do you need?

- Multi-Purpose Disinfectant
- Food Contact Sanitizer
- Glass Cleaner
- Floor Cleaner
- Air Freshener/Room Refresher
- Stainless Steel Cleaner
- Disinfectant Wipes
- Hand Soap
- Hand Sanitizer

### What tools do you need?

Refillable spray bottles, trigger sprayers, sanitizer pail, microfiber cloths, putty knife, vacuum, dust pan/broom, mop/bucket, window scrubber/squeegee, 'Wet Floor' sign, high-duster, gloves, PPE



Cleaning & Disinfection Frequency \_\_\_\_\_

Inspection Frequency \_\_\_\_\_

Responsible \_\_\_\_\_

Required PPE\* \_\_\_\_\_

\*in addition to any required by SDS



**ProGuard**  
SERVICE & SOLUTIONS



### Specific touchpoints

- Doorknobs/push plates
- Thermostat
- Elevator buttons
- Escalator and stairwell railings
- Water fountain
- Public phones
- Public computers
- Light switches
- Chair armrests



To help protect against COVID-19, ensure treated surfaces remain wet for contact time indicated on product label.

*\*Refer to product label for use directions*

**Resuming Operations:  
Commercial Facilities**



# PUBLIC AREAS

## Entrance, Lobby and Hallways



### Cleaning and disinfection guidelines

\*Refer to product labels for complete directions for use.

1. Place 'Wet Floor' sign.
2. Pick up debris and remove gum from floor with putty knife or blunt-edged tool.
3. Empty trash cans and recycling bins making sure to securely tie-off full bags for transport. Clean and disinfect the outside of trash cans using **multi-purpose disinfectant**. Replace liners.
4. Clean and disinfect all hard, non-porous surfaces focusing on high-touch surfaces using a **multi-purpose disinfectant**. **Ensure treated surfaces remain wet for contact time indicated on product label.**
5. Clean glass and windows using **multi-purpose disinfectant** or **glass cleaner** and a fresh microfiber or squeegee to ensure a streak-free finish.
6. Refill **air freshener**, **hand sanitizer** and **disinfectant wipe** dispensers as needed. Disinfect dispensers and nearby walls using **multi-purpose disinfectant**.
7. Vacuum carpet/entrance mats and vacuum or sweep then mop hard-surfaced floors with **floor cleaner** (tile/wood/LVT) as needed.
8. Inspect for quality.



### Specific touchpoints

Doorknobs/push plates, elevator buttons, light switches, water fountain push plate, reception counters, public phones and computers, chair armrests, tables, hand sanitizer dispensers, etc.



# PUBLIC AREAS

Transportation: Shuttles/Buses, Trains, Cars, etc.



## Cleaning and disinfection guidelines

\*Refer to product labels for complete directions for use.

1. Restock paper products and **hand sanitizer** dispensers as needed. Disinfect exterior of dispensers with **multi-purpose disinfectant** (including pump).
2. Wearing gloves, pick up debris from seats, tables and floor.
3. Empty trash cans and recycling bins making sure to securely tie-off full bags for transport. Clean and disinfect the outside of bins using **multi-purpose disinfectant**. Replace liners.
4. Spot clean seats and windows to remove visible soils such as food or dirt.
5. For on-board restrooms, clean and disinfect all hard, non-porous surfaces with **multi-purpose disinfectant** (toilets, sinks, countertops, faucets and handrails). **Ensure treated surfaces remain wet for contact time indicated on product label.**
6. Starting at the back of the vehicle and working forward, apply **multi-purpose disinfectant** on all hard surfaces including front and back of seats, windows, the wall below the windows, and any grab bars. If the seat is covered with a soft, absorbent material consider *periodically* cleaning with an upholstery cleaner.
7. At the vehicle entrance apply **multi-purpose disinfectant** to grab bars, handrails, and other hard, non-porous surfaces such as inside of doors, door handles (inside and out) or steering wheel.
8. **Ensure treated surfaces remain wet for contact time indicated on product label.** Following required contact time, wipe the surfaces or allow to air dry.
9. Sweep then mop floor as needed.



## Specific touchpoints

Grab bars, handrails, seat backs, door handles, steering wheel, etc.

# PUBLIC AREAS

## Elevators



### Cleaning and disinfection guidelines

\*Refer to product labels for complete directions for use.

1. Pick up debris and remove gum from floor with putty knife or blunt-edged tool.
2. Clean and disinfect all hard, non-porous surfaces focusing on high-touch surfaces using a **multi-purpose disinfectant**. **Ensure treated surfaces remain wet for contact time indicated on product label.** For electronics, spray cloth and wipe surface.
3. Vacuum carpet and vacuum or sweep then mop hard-surfaced floors with **floor cleaner** (tile/wood/LVT) as needed.
4. Inspect for quality.



### Specific touchpoints

Elevator buttons, grabrails, etc.

# PUBLIC AREAS

## Conference Rooms and Office Spaces



### Cleaning and disinfection guidelines

\*Refer to product labels for complete directions for use.

1. Pick up debris and remove gum from floor with putty knife or blunt-edged tool.
2. Empty trash cans and recycling bins making sure to securely tie-off full bags for transport. Clean and disinfect the outside of trash cans using **multi-purpose disinfectant**. Replace liners.
3. Dust file cabinets and bookshelves as needed.
4. Clean and disinfect all hard, non-porous surfaces focusing on high-touch surfaces using a **multi-purpose disinfectant**. **Ensure treated surfaces remain wet for contact time indicated on product label.** For electronics, spray cloth and wipe surface.
5. Vacuum carpet/rugs and vacuum or sweep then mop hard-surfaced floors with **floor cleaner** (tile/wood/LVT) as needed.
6. Inspect for quality.



### Specific touchpoints

Doorknobs/push plates, light switches, public phones and computers, desks/tables and chairs including armrests, coffee and beverage stations, etc.



# PUBLIC AREAS

## Gym / Fitness Center



### Cleaning and disinfection guidelines

\*Refer to product labels for complete directions for use.

1. Place 'Wet Floor' sign.
2. Pick up debris and remove gum from floor with putty knife or blunt-edged tool.
3. Empty trash cans and recycling bins making sure to securely tie-off full bags for transport. Clean and disinfect the outside of trash cans using **multi-purpose disinfectant**. Replace liners.
4. Clean and disinfect all hard, non-porous surfaces focusing on high-touch surfaces using a **multi-purpose disinfectant**. **Ensure treated surfaces remain wet for contact time indicated on product label.** For electronics, spray cloth and wipe surface.
5. Clean glass and windows using **multi-purpose disinfectant** or **glass cleaner** and a fresh microfiber or squeegee to ensure a streak-free finish.
6. Refill **air freshener, hand sanitizer and disinfectant wipe** dispensers as needed. Disinfect dispensers and nearby walls using **multi-purpose disinfectant**.
7. Vacuum carpet/mats and vacuum or sweep then mop hard-surfaced floors with **floor cleaner** (tile/wood/LVT) as needed.
8. Inspect for quality.



### Specific touchpoints

Doorknobs/push plates, light switches, water fountain push plate, gym equipment and machines, weights, remote control, thresholds and handrails, tables and chairs, trash can, recycling bin, hand sanitizer dispenser, etc.

# PUBLIC AREAS

## Swimming Pools and Whirlpool Spas



**NOTE:** Do not allow use of pool or spa until water chemistry is within normal operating limits and stabilized, sand filters have been backflushed and circulating water systems are operating.



### Cleaning and disinfection guidelines

\*Refer to product labels for complete directions for use.

1. Pick up large debris from tables, lounge chairs and pool deck.
2. Empty trash cans and recycling bins making sure to securely tie-off full bags for transport. Clean and disinfect the outside of trash cans using **multi-purpose disinfectant**. Replace liners.
3. Clean and disinfect all hard, non-porous surfaces focusing on high-touch surfaces such as arms of lounge chairs using a **multi-purpose disinfectant**. **Ensure treated surfaces remain wet for contact time indicated on product label**. Set up system so that furniture that needs to be cleaned and disinfected is kept separate from previously cleaned and disinfected items.
4. Sweep then mop pool deck as needed.
5. Clean glass and windows using **multi-purpose disinfectant** or **glass cleaner** and a fresh microfiber or squeegee to ensure a streak-free finish.
6. Follow proper operation, maintenance, and disinfection (e.g., with chlorine and bromine) of pools and hot tubs. For safety, ensure drain covers are in place and visible at bottom of pool.



### Specific touchpoints

Doorknobs/push plates, light switches, tables and lounge chairs including armrests, water fountain push plate, thresholds and hand railings, shower handles, towel rack, ring buoy, cleaning pole, ladder and step rails, etc.



# PUBLIC AREAS

## Recreational Equipment



**NOTE:** Discourage use of shared items that are difficult to clean, sanitize or disinfect OR that are meant to contact face (i.e., goggles, nose clips or snorkels).



### Cleaning and disinfection guidelines

\*Refer to product labels for complete directions for use.

1. Between each use, pre-clean items as necessary to remove any visible soil (i.e., sand, dirt, food particles, etc.). For items with no visible soil, no pre-cleaning is required.
2. Clean and disinfect all hard, non-porous surfaces focusing on high-touch surfaces using a **multi-purpose disinfectant**.  
**Ensure treated surfaces remain wet for contact time indicated on product label.**
3. Wipe the surface of items or allow to air dry and return to proper storage location.



### Specific touchpoints

Equipment straps/paddles/handles (i.e., on kayaks, paddleboards, inflatable tubes), pool slide or climbing structure railings, tennis racquets, golf (carts, balls, flags, clubs), fishing poles or nets, bike handlebars, etc.

# PUBLIC AREAS

## Water Fountain



Spray **multi-purpose disinfectant** generously on microfiber cloth or surface of water fountain ensuring surface remains wet to achieve disinfection. Ensure push plate is properly wetted.

---



Rinse the spigot with potable water and wipe with clean cloth.

---



If needed, use **stainless steel cleaner** and a clean, soft cloth to shine exterior.

---



Apply **food contact sanitizer** to spigot with either clean cloth and bucket or spray bottle application ensuring it remains wet for contact time indicated on product label. Allow to air dry. Do not wipe or rinse.



# PUBLIC AREAS

## Grab & Go / Self-Service Area



### Cleaning and disinfection guidelines

\*Refer to product labels for complete directions for use.

1. Place 'Wet Floor' sign.
2. Pick up debris and remove gum from floor with putty knife or blunt-edged tool.
3. Empty trash cans and recycling bins making sure to securely tie-off full bags for transport. Clean and disinfect the outside of trash cans using **multi-purpose disinfectant**. Replace liners.
4. Clean and disinfect all hard, non-porous surfaces focusing on high-touch surfaces using a **multi-purpose disinfectant**. **Ensure treated surfaces remain wet for contact time indicated on product label.**
5. Clean any glass or windows using **multi-purpose disinfectant** or **glass cleaner** and a fresh microfiber or squeegee to ensure a streak-free finish.
6. Refill **hand sanitizer** and **disinfectant wipe** dispensers as needed. Disinfect dispensers and nearby walls using **multi-purpose disinfectant**.
7. Vacuum carpet/entrance mats and vacuum or sweep then mop hard-surfaced floors with **floor cleaner** (tile/wood/LVT) as needed.



### Specific touchpoints

Doorknobs/push plates, light switches, trash lids/handles, handrails, cash registers, etc.

# PUBLIC AREAS

## Childcare Facility



**NOTE:** Any food contact surfaces that have been disinfected must be thoroughly rinsed with potable water and sanitized using a food contact sanitizer.



## Cleaning and disinfection guidelines

\*Refer to product labels for complete directions for use.

### Food Contact Surfaces:

1. Clear tabletops and counters of dishware, food debris, and other items. During a high-risk/outbreak scenario, a disinfection step may be added using **multi-purpose disinfectant**. A potable water rinse and sanitization using a **food contact sanitizer** is required post-disinfection. Refer to product label for required contact time.
2. Pre-clean visibly soiled areas. Using a **food contact sanitizer**, sanitize food contact surfaces/objects with either a clean cloth and pail application (damp, wrung-out cloth) or spray bottle application (spray surface, do not wipe dry). **Ensure treated surfaces remain wet for contact time indicated on product label.** Allow to air dry before placing items on the surface or returning objects to use.

### Non-Food Contact Surfaces:

1. Empty trash cans and recycling bins making sure to securely tie-off full bags for transport. Clean and disinfect the outside of trash cans using **multi-purpose disinfectant**. Replace liners.
2. Pre-clean visibly soiled areas. Disinfect all hard, non-porous surfaces focusing on high-touch surfaces using a **multi-purpose disinfectant**. **Ensure treated surfaces remain wet for contact time indicated on product label.** For electronics, spray cloth and wipe surface.
3. Clean glass and windows using **multi-purpose disinfectant** or **glass cleaner** and a fresh microfiber or squeegee to ensure a streak-free finish.
4. Vacuum carpet/rugs and vacuum or sweep then mop hard-surfaced floors with **floor cleaner** (tile/wood/LVT/walk-off mats) as needed.
5. Inspect for quality.



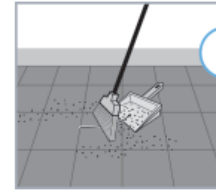
## Specific touchpoints

**Food Contact:** Mixed-use tables, highchair/booster seat, food prep surfaces, eating utensils, dishes, plastic-mouthed toys, pacifiers, etc.

**Non-Food Contact:** Doorknobs and cabinet handles, light switches, water fountain push plate, changing tables, potty chairs, diaper pails, chairs, etc.

# PUBLIC AREAS

## Floor Care – Mopping



Clear floor of all movable items including rugs and floor mats. Wipe up spills and sweep entire floor to remove loose soil and debris.



**STOP** Put out 'Wet Floor' sign.

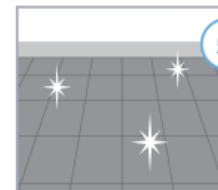
Fill mop bucket with 4–5 gallons of water. Add **floor cleaner** as specified on product label.



To prevent streaking from dirty kitchen mops, use a dedicated cotton or synthetic mop for public areas. Dip mop into the cleaning solution and wring out well before applying to floor. Use damp mop only. Do not over-wet floor.



Mop in 'figure 8' pattern with overlaps. Flip mop when first side is soiled. Rinse when both sides are soiled. Continue mopping until entire floor is clean. Change solution when soiled.



Mop or squeegee solution toward drain. Allow floor to air dry. Thoroughly clean and store all equipment after use (i.e., hang mop to store, empty dirty cleaning solution into mop sink).



# PUBLIC AREAS

## Carpet Care – Vacuuming

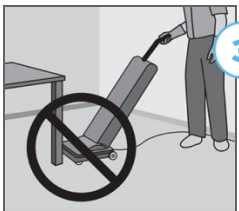


1 Wearing gloves, pick up debris.



2 Vacuum main areas.

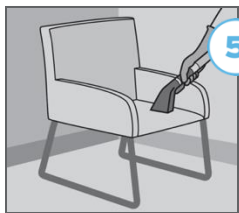
**Note:** Do not use vacuums with frayed power cords.



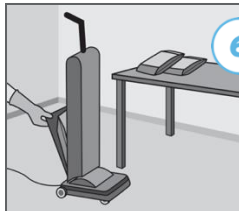
3 Vacuum under trash cans and furniture. Avoid bumping furniture legs.



4 Vacuum walk-off mats and clean underneath.



5 Spot vacuum furniture and use attachments to clean corners and baseboards.



6 Replace vacuum bag when 2/3 full. Ensure proper disposal of full bag.



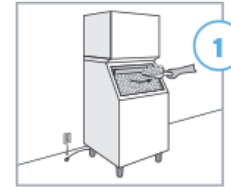
7 Report spots and stains to supervisor.

# PUBLIC AREAS

## Ice Machines



**NOTE:** This procedure is only for the ice bins. For ice maker cleaning, please refer to instructions in the OEM manual.



Unplug the machine. Remove and discard all ice. Replace water filter if the ice machine has been shut down for more than 4 weeks.



Clean interior of unit with **manual detergent**. Give special attention to the bottom, corners, doors, gaskets, hinges and latches. Scrub built-up deposits with nylon brush or scraper.



Rinse well with clean water.



Spray interior surfaces, scoop and interior of door with **food contact sanitizer** as specified by the product label. Allow to dry. Do not rinse.



Clean / disinfect exterior especially high-touch areas like handle with **multi-purpose disinfectant**. If needed, use **stainless steel cleaner** and a clean, soft cloth to shine exterior. Plug in machine and fill with fresh ice.

# PUBLIC AREAS

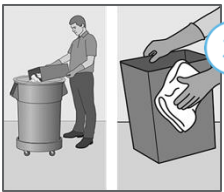
## Trash and Recycling Collection



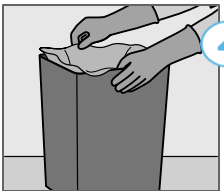
- 1 Wear protective gloves. Line trash can and recycling bins with appropriate size bag.



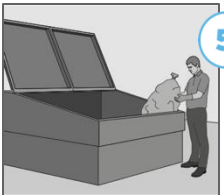
- 2 Pick up debris. Keep containers nearby to avoid blocking hallways.



- 3 Empty trash cans and recycling bins making sure to securely tie-off full bags for transport. Clean and disinfect outside of trash cans using **multi-purpose disinfectant**.



- 4 Replace liner if perishable items enclosed such as food or liquid.



- 5 Empty trash can and recycling bin in main dumpster area.

# PUBLIC AREAS

## Loading Dock / Receiving Area



### Cleaning and disinfection guidelines

\*Refer to product labels for complete directions for use.

1. Place 'Wet Floor' sign.
2. Pick up debris and remove gum from floor with putty knife or blunt-edged tool.
3. Empty trash cans and recycling bins making sure to securely tie-off full bags for transport. Clean and disinfect the outside of trash cans using **multi-purpose disinfectant**. Replace liners.
4. Clean and disinfect all hard, non-porous surfaces focusing on high-touch surfaces using a **multi-purpose disinfectant**. **Ensure treated surfaces remain wet for contact time indicated on product label.**
5. Clean any glass or windows using **multi-purpose disinfectant** or **glass cleaner** and a fresh microfiber or squeegee to ensure a streak-free finish.
6. Refill **hand sanitizer** and **disinfectant wipe** dispensers as needed. Disinfect dispensers and nearby walls using **multi-purpose disinfectant**.
7. Vacuum carpet/entrance mats and vacuum or sweep then mop hard-surfaced floors with **floor cleaner** (tile/wood/LVT) as needed.



### Specific touchpoints

Doorknobs/push plates, elevator buttons, light switches, carts, trash lids/handles, handrails, operating equipment, steering wheels, dolly handles, etc.





## Establish routine cleaning and disinfection inspections in Public Areas...

## Establish routine cleaning and disinfection inspections in Public Areas...

	Evaluation		Notes
	OK	Needs Attn.	
<b>Floors:</b>			
• Debris-free (e.g., trash, gum, etc.) and vacuumed	<input type="checkbox"/>	<input type="checkbox"/>	
• Sanitary seam/grout lines	<input type="checkbox"/>	<input type="checkbox"/>	
• Streaks or stickiness	<input type="checkbox"/>	<input type="checkbox"/>	
<b>Walls and Ceiling:</b>			
• Visual cleanliness	<input type="checkbox"/>	<input type="checkbox"/>	
• Surface cracks	<input type="checkbox"/>	<input type="checkbox"/>	
• Paint condition	<input type="checkbox"/>	<input type="checkbox"/>	
<b>Furniture and Furnishings:</b>			
• Debris and dust-free	<input type="checkbox"/>	<input type="checkbox"/>	
• Hand sanitizer/wipes replenished	<input type="checkbox"/>	<input type="checkbox"/>	
• Maintenance of specialty surfaces (wood, marble)	<input type="checkbox"/>	<input type="checkbox"/>	

[illegible]

# FOODSERVICE: CAFETERIA / DINING AREAS

## General Instructions

### What products do you need?

- Multi-Purpose Disinfectant
- Glass Cleaner
- Food Contact Sanitizer
- Manual Detergent

### What tools do you need?

Refillable spray bottles, trigger sprayers, microfiber cloths, detergent and sanitizer pails, non-abrasive scrub pad, putty knife, vacuum, dust pan/broom, mop/bucket, window scrubber/squeegee, 'Wet Floor' sign, PPE

### Specific touchpoints

- Dining tables
- Beverage stations
- Doorknobs
- Push plates
- Light switches
- Order/payment counters
- Tray and utensil pickup areas
- Grab & Go
- Beverage and condiment cases
- Trash and recycling receptacles



Cleaning & Disinfection Frequency \_\_\_\_\_  
Inspection Frequency \_\_\_\_\_  
Responsible \_\_\_\_\_  
Required PPE\* \_\_\_\_\_

\*in addition to any required by SDS



**Tip:** To help protect against COVID-19, ensure treated surfaces remain wet for contact time indicated on product label.

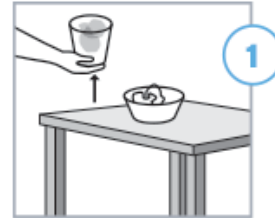
*\*Refer to product label for use directions*

# FOODSERVICE: CAFETERIA / DINING AREAS

## Tabletops / Countertops



**NOTE:** Any food contact surfaces that have been disinfected must be thoroughly rinsed with potable water and sanitized using a food contact sanitizer.

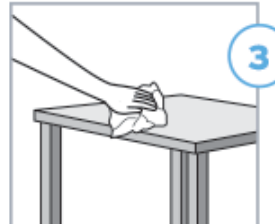


After customers leave, clear tabletops and counters of all dishware, food debris and other items.

**NOTE:** During a high-risk/outbreak scenario, a disinfection step may be added to tabletop/countertop and the outside of condiment containers using **multi-purpose disinfectant**. A potable water rinse and sanitization using a **food contact sanitizer** is required post-disinfection. Refer to product label for required contact time.



Clean entire surface of tabletop/countertop (including edges) using **manual detergent**. Use with a clean cloth and bucket application (damp, wrung-out cloth) or spray bottle and clean cloth application (spray surface and wipe clean). Ensure gross food particles/soil are removed. Allow additional product dwell time for visibly soiled areas.



Rinse with potable water using a clean cloth and allow to air dry. Repeat on all food contact surfaces.



Sanitize tabletop/countertop using **food contact sanitizer** and either a clean cloth and pail application (damp, wrung-out cloth) or spray bottle application (spray surface, do not wipe dry). **Ensure treated surfaces remain wet for contact time indicated on product label.** Allow to air dry before placing items on the surface or returning to use.

# FOODSERVICE: CAFETERIA / DINING AREAS

## Chairs, Stools, and Highchairs/Booster Seats



**NOTE:** Any food contact surfaces that have been disinfected must be thoroughly rinsed with potable water and sanitized using a food contact sanitizer.



Pre-clean visibly soiled areas. Disinfect entire surface of chairs, stools and table legs using **multi-purpose disinfectant**. Pay special attention to high-touch areas such as backs/arms of chairs. Use either a clean cloth and bucket application (damp wrung-out cloth), or spray bottle and clean cloth application (spray surface and wipe clean).



Ensure treated surfaces remain wet for contact time indicated on product label. Use a non-abrasive scrub pad to loosen any dried-on food particles. Wipe dry using a soft, clean cloth.



Rinse highchairs/booster seats with potable water and sanitize using **food contact sanitizer** and either a clean cloth and pail application (damp, wrung-out cloth) or spray bottle application (spray surface, do not wipe dry). **Ensure treated surfaces remain wet for contact time indicated on product label.** Allow to air dry before placing returning to use.

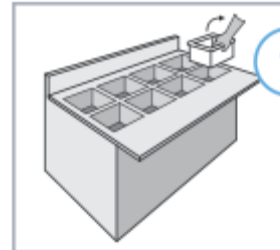


# FOODSERVICE: CAFETERIA / DINING AREAS

## Cafeteria Serving Line / Salad Bars

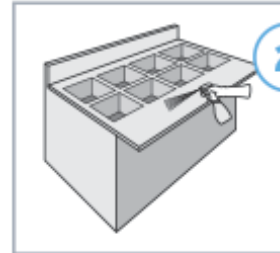


**NOTE:** Any food contact surfaces that have been disinfected must be thoroughly rinsed with potable water and sanitized using a food contact sanitizer.



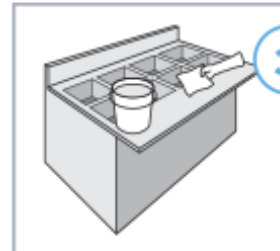
1

Remove or cover any exposed food items to avoid potential for contamination.



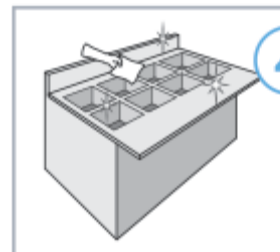
2

Disinfect all non-food contact surfaces including sneeze guards, railings, tables using a **multi-purpose disinfectant**. **Ensure treated surfaces remain wet for contact time indicated on product label.** Wipe or allow to air dry.



3

For any food contact surfaces (excluding food containers), rinse with fresh water and sanitize using a **food contact sanitizer**. **Ensure treated surfaces remain wet for contact time indicated on product label.** When a food container is empty, remove it and put through dishmachine.



4

Consider changing out utensils frequently and limit the number of guests allowed at the buffet/salad bar simultaneously. Once the area has been properly cleaned, sanitized, and/or disinfected, return or uncover food and resume operation.

# FOODSERVICE: CAFETERIA / DINING AREAS

## Marketplace or Coffee / Gift Shop



**NOTE:** Any food contact surfaces that have been disinfected must be thoroughly rinsed with potable water and sanitized using a food contact sanitizer.



## Cleaning and disinfection guidelines

\*Refer to product labels for complete directions for use.

### Food Contact Surfaces:

1. Clear tabletops and counters of dishware, food debris, and other items. During a high-risk/outbreak scenario, a disinfection step may be added using **multi-purpose disinfectant**. A potable water rinse and sanitization using a **food contact sanitizer** is required post-disinfection. Refer to product label for required contact time.
2. Pre-clean and sanitize food contact surfaces with either a clean cloth and pail application (damp, wrung-out cloth) or spray bottle application (spray surface, do not wipe dry). **Ensure treated surfaces remain wet for contact time indicated on product label.** Allow to air dry before placing items on the surface or returning objects to use.

### Non-Food Contact Surfaces:

1. Empty trash cans and recycling bins making sure to securely tie-off full bags for transport. Clean and disinfect the outside of trash cans using **multi-purpose disinfectant**. Replace liners.
2. Pre-clean visibly soiled areas.
3. Disinfect all hard, non-porous surfaces focusing on high-touch surfaces using **multi-purpose disinfectant**. **Ensure treated surfaces remain wet for contact time indicated on product label.** For electronics, spray cloth and wipe surface.
4. Clean glass and windows using **multi-purpose disinfectant** or **glass cleaner** and a fresh microfiber or squeegee to ensure a streak-free finish.
5. Vacuum carpet and vacuum or sweep then mop hard-surfaced floors with **floor cleaner** (tile/wood/LVT/walk-off mats) as needed.
6. Inspect for quality.



## Specific touchpoints

**Food Contact:** Food displays, tabletops and counters, food and drink prep surfaces/tools, glasses, utensils, dishes, etc.

**Non-Food Contact:** Knobs and handles, light switches, beverage station, chairs, remote controls, cash register, etc.

# ENSURE ENVIRONMENTAL HYGIENE

Establish routine cleaning and disinfection inspections in the Cafeteria / Dining Areas...

	Evaluation		Notes
	OK	Needs Attn.	
<b>Floors:</b>			
• Debris-free (e.g., trash, gum, etc.) and vacuumed	<input type="checkbox"/>	<input type="checkbox"/>	
• Sanitary seam/grout lines	<input type="checkbox"/>	<input type="checkbox"/>	
• Streaks or stickiness	<input type="checkbox"/>	<input type="checkbox"/>	
<b>Walls and Ceiling:</b>			
• Visual cleanliness	<input type="checkbox"/>	<input type="checkbox"/>	
• Surface cracks	<input type="checkbox"/>	<input type="checkbox"/>	
• Paint condition	<input type="checkbox"/>	<input type="checkbox"/>	
<b>Furniture and Furnishings:</b>			
• Debris and dust-free	<input type="checkbox"/>	<input type="checkbox"/>	
• Hand sanitizer replenished	<input type="checkbox"/>	<input type="checkbox"/>	
• Maintenance of specialty surfaces (wood, marble)	<input type="checkbox"/>	<input type="checkbox"/>	

	Evaluation		Notes
	OK	Needs Attn.	
<b>Glass and mirrors:</b>			
• Clean and streak-free	<input type="checkbox"/>	<input type="checkbox"/>	
<b>Malodors:</b>			
• Musty, smokey, or unpleasant	<input type="checkbox"/>	<input type="checkbox"/>	
<b>Other:</b>			
•	<input type="checkbox"/>	<input type="checkbox"/>	
•	<input type="checkbox"/>	<input type="checkbox"/>	
•	<input type="checkbox"/>	<input type="checkbox"/>	
•	<input type="checkbox"/>	<input type="checkbox"/>	
•	<input type="checkbox"/>	<input type="checkbox"/>	
•	<input type="checkbox"/>	<input type="checkbox"/>	
•	<input type="checkbox"/>	<input type="checkbox"/>	
•	<input type="checkbox"/>	<input type="checkbox"/>	
•	<input type="checkbox"/>	<input type="checkbox"/>	
•	<input type="checkbox"/>	<input type="checkbox"/>	
•	<input type="checkbox"/>	<input type="checkbox"/>	





# FOODSERVICE: KITCHEN

## General instructions

### What products do you need?

- Multi-Purpose Disinfectant
- Food Contact Sanitizer
- Manual Detergent
- Machine Detergent
- Machine Sanitizer
- Rinse Additive
- Presoak
- Degreaser
- Stainless Steel Cleaner
- Freezer Cleaner

### What tools do you need?

Refillable spray bottles, trigger sprayers, microfiber cloths, nylon brush, dishmachine, putty knife, vacuum, dust pan/broom, mop/bucket, window scrubber/squeegee, toothpick, 'Wet Floor' sign, PPE

### Specific touchpoints

- **Food Contact:**
- Counters/food-prep surfaces
- Tables
- Sinks
- Food Storage Equipment
- Thermometers
- Beverage stations
- **Non-Food Contact:**
- Buttons on equipment (i.e., bump pads and controls)
- Light switches
- Faucets
- Cupboards/drawer handles
- Hand Soap/Sanitizer dispenser
- Towel dispenser
- Labeling system keypad



Cleaning & Disinfection Frequency \_\_\_\_\_

Inspection Frequency \_\_\_\_\_

Responsible \_\_\_\_\_

Required PPE\* \_\_\_\_\_

\*in addition to any required by SDS



To help protect against COVID-19, ensure treated surfaces remain wet for contact time indicated on product label.

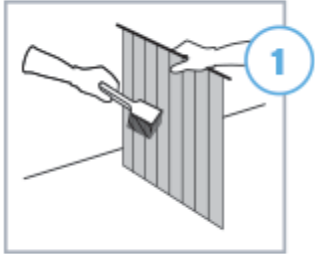
*\*Refer to product label for use directions*





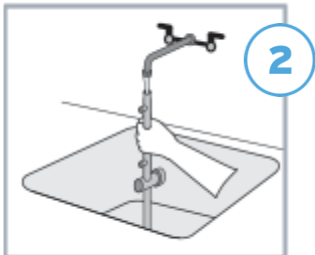
# FOODSERVICE: KITCHEN

## Dishmachine – Ready for Operation

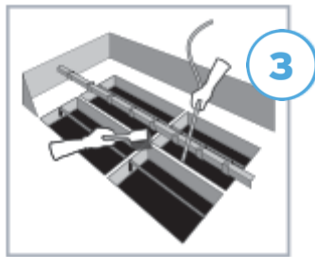


**1**  Turn off and drain dishmachine.

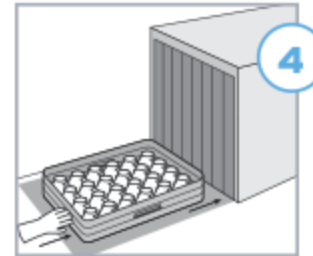
Check drain for blockage and clear if needed. Remove scrap accumulation trays/pump intake screen and flush under running water. Scrub parts clean (if necessary) using brush and **manual detergent**. Insert parts back into dishmachine.



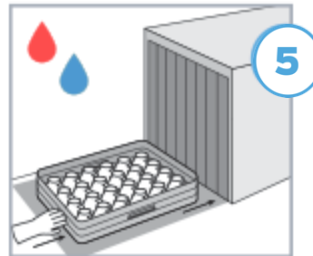
**2** Unscrew wash arms and end caps. Flush under running water. Clean nozzles with toothpick. Remove soil inside the pre-wash and wash tank area of dishmachine using a brush, water and **manual detergent**. Insert parts back into dishmachine.



**3** Ensure **machine detergent** and **rinse additive** are connected to appropriate dispensers. If the machine also utilizes a **chemical sanitizer**, check the expiration date and consider replacing the product if expired.



**4** Power on dishmachine and allow wash tank to fill and reach appropriate temperature (unless it is a dump-and-fill machine). Check the data plate on the machine for temperature requirements.



**5** Run a rack through dishmachine

**For high temperature machines:** Ensure the rinse water temperature reaches at least 180°F.

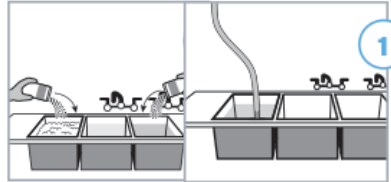
**For low temperature machines:** Test the chemical sanitizer level with test strips on residual water (50-100 ppm chlorine).



**NOTE:** Soft water will reduce scale buildup on equipment and improve results for one-pass warewashing. Contact your ProGuard rep to learn more about softening solutions for your dishmachine/entire kitchen and with any additional dishmachine questions.

# FOODSERVICE: KITCHEN

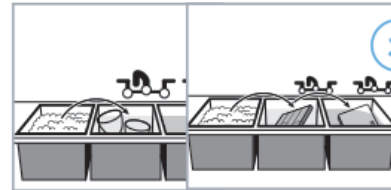
## Manual Warewashing



Set up 3-compartment sink with **manual detergent** solution in the first sink, warm rinse water in the second sink and **food contact sanitizer** solution in the third sink. Follow product label for correct use dilutions.



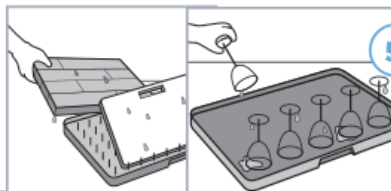
Place ware or other food contact items (i.e., cutting boards) in detergent sink, soak as needed, and scrub off any remaining soil or stains with nylon brush.



Submerge ware or other food contact items in rinse water.



Submerge ware or other food contact items in **sanitizer** sink for one minute, or as specified by product label and/or local guidelines.



Place sanitized items on rack or drain board to air dry. Do not wipe or rinse.

# FOODSERVICE: KITCHEN

## Flatware



**NOTE:** Soft water will reduce scale buildup on equipment and improve results for one-pass warewashing. Contact your ProGuard rep to learn more about softening solutions for your dishmachine or entire kitchen.

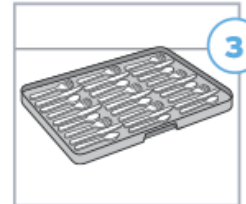


Fill presoak tub or bus pan with **presoak** solution as specified by the product label.

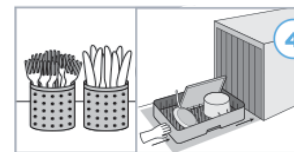
**NOTE:** Change presoak solution when water cools or is dirty and ensure tub holding soiled ware is properly sanitized after use.



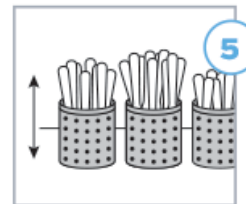
Sort dirty flatware and place into **presoak** solution. Ensure flatware is completely submerged. Soak for a minimum of 20–30 minutes.



Remove flatware and place in a single layer on an open rack. Rinse off excess food soil.



Sort flatware and transfer from open rack to baskets. Do not overload. Run through dishmachine wash cycle with handles down.



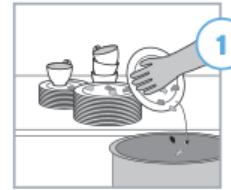
Shake off excess water and allow to cool down while air drying. Transfer to empty basket and store flatware with handles up. Do not touch eating ends of flatware. Consider covering clean ware to ensure it remains sanitary.

# FOODSERVICE: KITCHEN

## Plates and Tableware



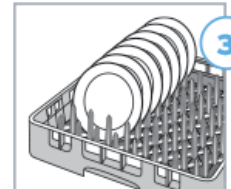
**NOTE:** Soft water will reduce scale buildup on equipment and improve results for one-pass warewashing. Contact your ProGuard rep to learn more about softening solutions for your dishmachine or entire kitchen.



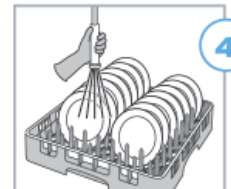
1 When sorting soiled wares, place flatware in separate bus pan or open rack. Dump liquid from glasses/cups and place on suitable racks. Remove excess food from tableware (plates, bowls and saucers) by hand-scraping into garbage.



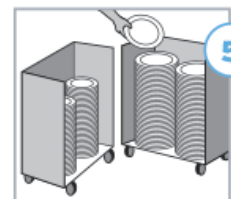
2 After hand-scraping wares, sort and stack the same type and size dishes together.



3 Load the same type and size dishes into racks. When multiple types or sizes are loaded on same rack, place smaller items in front so dishmachine spray is not blocked.



4 Manually spray loaded rack with hot water (min. 110°F) to remove loosened food. Wash in dishmachine with **machine detergent**. Use **rinse additive** for spotless ware. When chemical sanitization is required, use **machine sanitizer**.



5 Stack clean dishes in dish dolly ensuring only one dish size is stacked in each compartment. When dolly is completely loaded, store in dedicated area and cover to ensure ware remains sanitary.



# FOODSERVICE: KITCHEN

## Prepware: Pots, Pans and Cookware

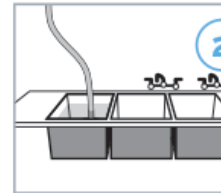


**NOTE:** Soft water will reduce scale buildup on equipment and improve results for one-pass warewashing. Contact your ProGuard rep to learn more about softening solutions for your dishmachine or entire kitchen.



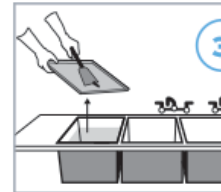
1

Remove excess food by hand-scraping ware. Rinse off any loosened food particles in pre-scrub sink.



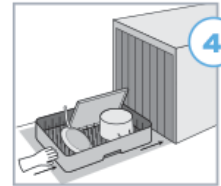
2

Fill the sink with **presoak** solution as specified by the product label. Completely submerge baked-on ware for 15–20 minutes depending on soil level.



3

Remove ware from soak solution. Scrape loosened soil with a nylon brush to discard.



4

Sort ware and place in racks. Wash in dishmachine with **machine detergent**. When chemical sanitization is required, use **machine sanitizer**.



5

When cycle is complete, remove racks and allow ware to air dry. Stack in dedicated storage area when dry. Consider covering clean ware to ensure it remains sanitary.

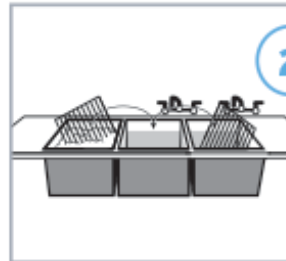
# FOODSERVICE: KITCHEN

## Reach-In Refrigerator and Freezer



Remove all food containers and place in temporary refrigerated storage. Remove shelving, brackets, etc.

**NOTE:** Freezer temperature must be raised above freezing (32°F/0°C) before cleaning.



2

Wash, rinse and sanitize all removed parts using either machine or manual methods.



3

Clean interior of unit with **manual detergent**. Scrub built-up deposits with nylon brush or scraper. Rinse well with potable water.



4

Spray surface with **food contact sanitizer** and allow to air dry.

**NOTE:** Pour sanitizing product (per label directions) into drain trough to prevent development of mold and odor-producing bacteria.



5

Return unit to proper temperature. Use a **multi-purpose disinfectant** for the exterior, ensuring proper disinfection of high-touch, non-food contact areas like handle. If needed, use **stainless steel cleaner** and a clean, soft cloth to shine exterior.

# FOODSERVICE: KITCHEN

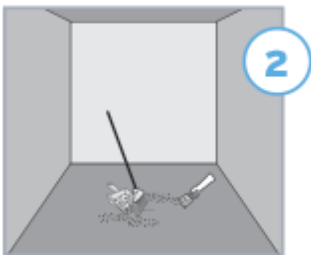
## Walk-In Refrigerator and Freezer



Remove all unpacked foods and food packaging from area. Clear floor of all movable items including floor mats.

 Turn off recirculation fan.

**NOTE:** If using a product other than **freezer cleaner**, all food must be removed and freezer temperature must be raised above freezing (32°F/0°C) before cleaning.



Wipe up spills and sweep away any loose soil and debris. Use a scraper or abrasive pad to remove built-up deposits.



 Put out 'Wet Floor' sign.

Apply **freezer cleaner** or **manual detergent** directly to floor, walls and shelving using a mop, sponge or sprayer. Soak for time specified on product label relative to the amount of soil and ice present. Mop to loosen and remove soil.



Dry mop or squeegee to remove excess liquid and wipe with dry cloth, as needed, to aid drying. A wet vacuum may also be used. When dry, replace unpacked foods and food packaging and turn on recirculation fan.

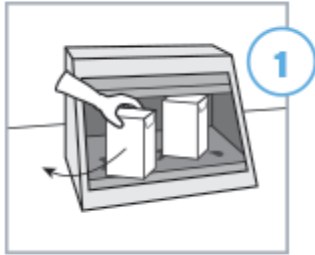


After cleaning, sanitize with **food contact sanitizer** as specified on product label. Allow to air dry. Do not rinse.

Ensure freezer handle is properly disinfected using a **multi-purpose disinfectant**.

# FOODSERVICE: KITCHEN

## Dry Storage



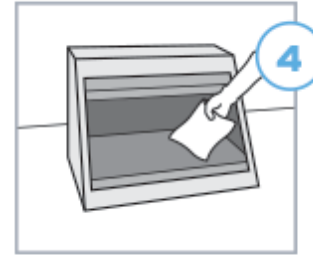
Remove food from container and store in dry area away from chemicals.



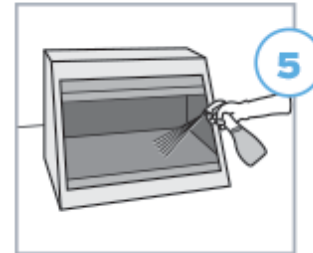
If container must be dry cleaned, scrape off any adhered soil. Brush or vacuum out. If container can be wet cleaned, pre-clean by removing loose, visible soil.



For wet cleaning, spray container with **manual detergent**. If soil on surface is greasy, use **degreaser** as specified on product label.



Allow cleaning solution to penetrate soils. Use a non-abrasive scrub pad or paper towel to loosen any remaining food particles and wipe clean. Allow surface to dry completely.



For both wet and dry clean, spray surface with **food contact sanitizer** and allow to air dry.

Ensure container handle is properly disinfected using a **multi-purpose disinfectant**.



# FOODSERVICE: KITCHEN

## Ice Machines



**NOTE:** This procedure is only for the ice bins. For ice maker cleaning, please refer to instructions in the OEM manual.



Unplug the machine. Remove and discard all ice. Replace water filter if the ice machine has been shut down for more than 4 weeks.



Clean interior of unit with **manual detergent**. Give special attention to the bottom, corners, doors, gaskets, hinges and latches. Scrub built-up deposits with nylon brush or scraper.



Rinse well with clean water.



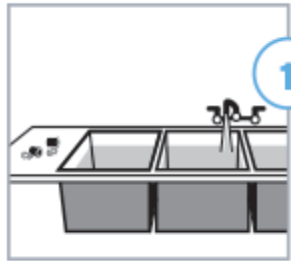
Spray interior surfaces, scoop and interior of door with **food contact sanitizer** as specified by the product label. Allow to dry. Do not rinse.



Clean / disinfect exterior especially high-touch areas like handle with **multi-purpose disinfectant**. If needed, use **stainless steel cleaner** and a clean, soft cloth to shine exterior. Plug in machine and fill with fresh ice.

# FOODSERVICE: KITCHEN

## Beverage Machine



Remove mixing nozzles, diffusers and cup rest from machine and thoroughly clean and sanitize using the manual or machine procedures.

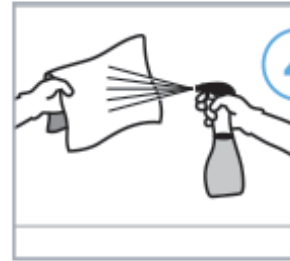
**NOTE:** For machine method, use a rack designed for small items.



To clean ice bin (if present): Remove and discard all ice. Clean interior of unit with **manual detergent**. Allow to soak for at least 5 minutes. Drain the solution and rinse with fresh water.



To sanitize ice bin (if present): Sanitize interior of unit with **food contact sanitizer** and allow solution to soak per time specified by product label before draining. Allow to dry. Do not rinse.



Clean / disinfect exterior and panel bottom (soda splash area) with **multi-purpose disinfectant**. If needed, use **stainless steel cleaner** and a clean, soft cloth to shine exterior.

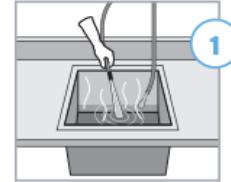
**NOTE:** Pour hot water down drip pan to ensure proper drainage.



Spray exterior food contact surface area with **food contact sanitizer**. **Ensure treated surfaces remain wet for contact time indicated on product label.** Allow to air dry. Reinstall nozzles, diffusers and cup rest. Fill ice bin with fresh ice (if applicable).

# FOODSERVICE: KITCHEN

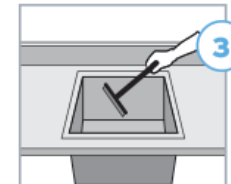
## Stainless Steel Sink



Fill all sinks to low level with hot water and **manual detergent**. For sinks with grease buildup and stubborn stains, use **degreaser**.



Scrub the inside and outside of all sinks, drain table, splash backs, and scrap baskets with a nylon brush and the detergent solution.



Drain and rinse all sinks. Squeegee water from all flat surfaces. Wipe exterior surfaces with a clean, dry cloth.



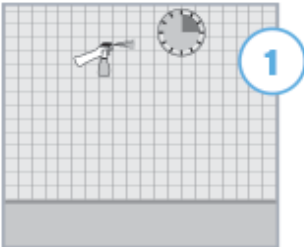
To sanitize, spray surfaces with **food contact sanitizer** solution as specified by the product label.



If needed, use **stainless steel cleaner** and a clean, soft cloth to shine exterior.

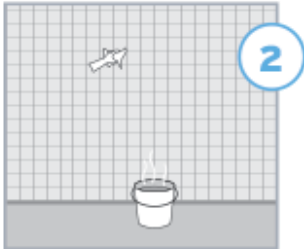
# FOODSERVICE: KITCHEN

## Walls

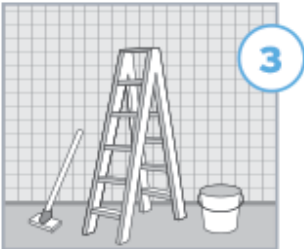


Remove all food items from surrounding area. Spray wall with **multi-purpose disinfectant** as specified on product label. If soil on surface is greasy, use **degreaser**. Areas with heavier soil, (i.e. around light switches by cooking areas), may require light scrubbing.

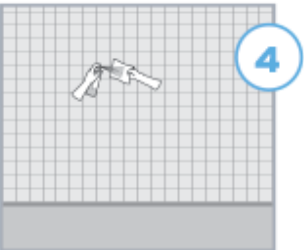
**NOTE:** Ensure cleaning solution does not drip onto food contact surfaces.



Using hot water in a bucket and a clean towel, rinse wall thoroughly. Wipe up any solution that may have dripped onto the floor. Change water and cleaning towel as needed.



Wipe wall with dry paper towel or clean cloth.



If needed, use **stainless steel cleaner** and a clean, soft cloth to shine exterior.



# FOODSERVICE: KITCHEN

## Storage/Delivery Cart and Dish Caddy



1

Pre-clean surfaces with **manual detergent**. If soil on surface is greasy, use **degreaser** as specified on product label.



2

Allow cleaning solution to penetrate soils. Use a non-abrasive scrub pad to loosen any dried-on particles.



3

Wipe surface of cart with dry paper towel or clean cloth. Be certain to clean all surfaces including cart legs.

Disinfect high-touch surfaces (i.e., handles) with **multi-purpose disinfectant**. Ensure treated surfaces remain wet for contact time indicated on product label. Wipe or allow to air dry.

# ENSURE ENVIRONMENTAL HYGIENE

Establish routine cleaning and disinfection inspections in the Kitchen...

	Evaluation		Notes
	OK	Needs Attn.	
<b>Floors:</b>			
• Debris-free (e.g., trash, gum, etc.)	<input type="checkbox"/>	<input type="checkbox"/>	
• Sanitary seam/grout lines	<input type="checkbox"/>	<input type="checkbox"/>	
• Streaks or stickiness	<input type="checkbox"/>	<input type="checkbox"/>	
<b>Walls and Ceiling:</b>			
• Visual cleanliness	<input type="checkbox"/>	<input type="checkbox"/>	
• Surface cracks	<input type="checkbox"/>	<input type="checkbox"/>	
• Paint condition	<input type="checkbox"/>	<input type="checkbox"/>	
<b>Furniture and Furnishings:</b>			
• Debris and dust-free	<input type="checkbox"/>	<input type="checkbox"/>	
• Hand soap and sanitizer replenished	<input type="checkbox"/>	<input type="checkbox"/>	
• Paper products replenished	<input type="checkbox"/>	<input type="checkbox"/>	
<b>Glass and mirrors:</b>			
• Clean and streak-free	<input type="checkbox"/>	<input type="checkbox"/>	

	Evaluation		Notes
	OK	Needs Attn.	
<b>Surfaces:</b>			
• Sinks soap scum, scale, streak, stain and mold/mildew-free	<input type="checkbox"/>	<input type="checkbox"/>	
• Handles/levers/knobs/faucets polished	<input type="checkbox"/>	<input type="checkbox"/>	
• Countertop debris-free and sanitary	<input type="checkbox"/>	<input type="checkbox"/>	
<b>Malodors:</b>			
• Musty, smokey, or unpleasant	<input type="checkbox"/>	<input type="checkbox"/>	
<b>Other:</b>			
• _____	<input type="checkbox"/>	<input type="checkbox"/>	
• _____	<input type="checkbox"/>	<input type="checkbox"/>	
• _____	<input type="checkbox"/>	<input type="checkbox"/>	
• _____	<input type="checkbox"/>	<input type="checkbox"/>	
• _____	<input type="checkbox"/>	<input type="checkbox"/>	
• _____	<input type="checkbox"/>	<input type="checkbox"/>	
• _____	<input type="checkbox"/>	<input type="checkbox"/>	
• _____	<input type="checkbox"/>	<input type="checkbox"/>	



# RESTROOMS

## General Instructions

### What products do you need?

- Multi-Purpose Disinfectant
- Bathroom Cleaner Disinfectant
- Toilet Bowl Cleaner
- Glass Cleaner
- Stainless Steel Cleaner
- Floor Cleaner Disinfectant
- Air Freshener
- Hand Soap

### What tools do you need?

Refillable spray bottles, trigger sprayers, microfiber cloths, toilet brush, tongs, non-abrasive scrub pad, putty knife, vacuum, dust pan/broom, mop/bucket, window scrubber/squeegee, 'Wet Floor' sign, gloves, PPE



Cleaning & Disinfection Frequency \_\_\_\_\_  
Inspection Frequency \_\_\_\_\_  
Responsible \_\_\_\_\_  
Required PPE\* \_\_\_\_\_

\*in addition to any required by SDS



### Specific touchpoints

- Doorknobs/push plates
- Towel dispenser handle
- Sink faucets
- Soap dispenser
- Stall door latch/locks
- Toilet/urinal flush lever
- Sanitary receptacle
- Baby changing station
- Sharps container

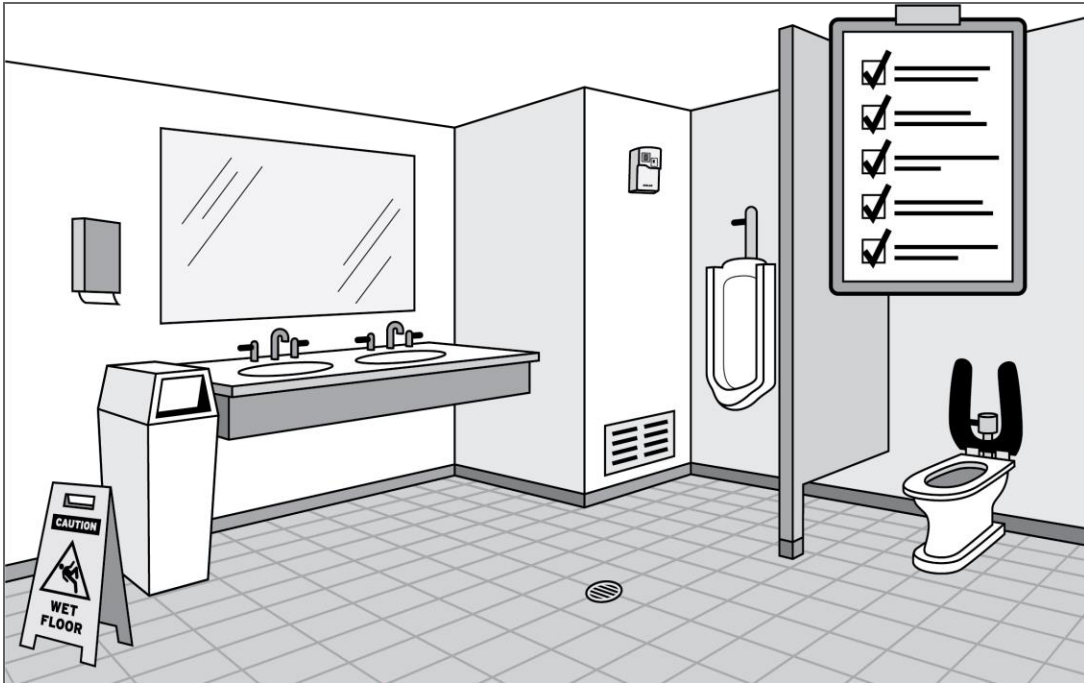


To help protect against COVID-19, ensure treated surfaces remain wet for contact time indicated on product label.

*\*Refer to product label for use directions*

# RESTROOMS

## General Instructions



**NOTE:** Scrub pads and microfiber cloths used to clean toilets and urinals should NOT be used on any other surfaces.



## Cleaning and disinfection guidelines

\*Refer to product labels for complete directions for use.

1. Place 'Wet Floor' sign at entrance.
2. Pick up debris and remove gum from floor with putty knife or blunt-edged tool.
3. Empty trash cans and recycling bins making sure to securely tie-off full bags for transport. Clean and disinfect the outside of trash cans using **multi-purpose disinfectant**. Replace liners.
4. Spray (and do not wipe) all hard, non-porous surfaces with **multi-purpose disinfectant** (toilets/urinals, sinks, countertops, and faucets). **Ensure treated surfaces remain wet for contact time indicated on product label.**
5. Clean glass and mirrors using **multi-purpose disinfectant** or **glass cleaner** and a fresh microfiber or squeegee and to ensure a streak-free finish.
6. Refill **air freshener**, **hand soap** and paper product dispensers as needed. Disinfect dispensers and nearby walls with **multi-purpose disinfectant**.
7. Scrub toilet and urinals with toilet brush.
8. Wipe all hard, non-porous including high-touch surfaces with microfiber after contact time indicated on **multi-purpose disinfectant** product label.
9. Vacuum or sweep then use mop hard-surfaced floors with **floor cleaner** (i.e. tile) as needed.
10. Inspect for quality.



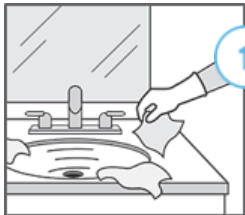
## Specific touchpoints

Door handles, light switches, stall lock/latch, toilet and urinal flush levers, faucets, hand soap and towel dispensers, hand dryers, changing station, sanitary hygiene receptacle, etc.

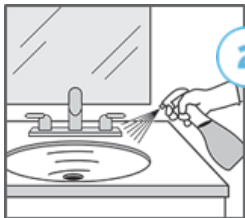


# RESTROOMS

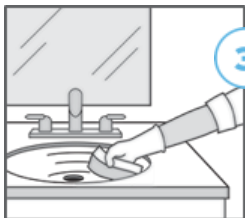
Countertops / Vanity and Sinks



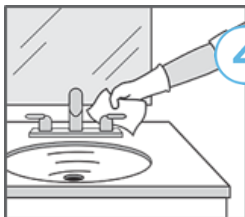
1 Wear protective gloves. Pick up debris around sink.



2 Spray sinks and countertops/vanity with **multi-purpose disinfectant**. Make certain to include all high-touch surfaces, such as faucets and soap/towel dispensers.



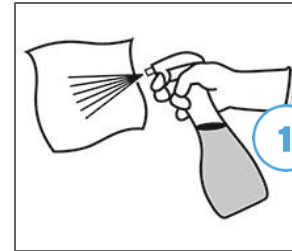
3 Allow solution to sit on surface for time indicated on product label. Scrub surfaces with a non-abrasive scrub pad or microfiber cloth.



4 Wipe surfaces with clean cloth or allow to air dry.

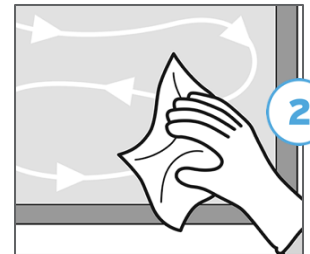
# RESTROOMS

## Mirrors and Glass Surfaces



Spray **multi-purpose disinfectant** or **glass cleaner** onto a clean microfiber. DO NOT spray cleaning solution directly onto mirror.

**NOTE:** To minimize streaking, do not use cloths treated with fabric softener.



Beginning at top, wipe surface by moving cloth from left to right and flipping as necessary until surface is dry and streak-free. Alternatively, apply product with window scrubber and scrub top to bottom. Squeegee surface moving top to bottom, left to right.



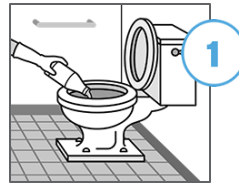
If needed, apply **stainless steel cleaner** to clean, soft cloth and wipe stainless steel, brass or chrome exterior surfaces.

# RESTROOMS

## Toilets and Urinals



**NOTE:** Scrub pads and microfiber cloths used to clean toilets and urinals should NOT be used on any other surfaces.



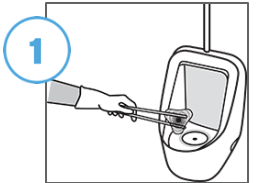
Wear protective gloves. Flush toilet. Remove water from bowl by forcing water over trap. Apply **toilet bowl cleaner, bathroom cleaner disinfectant** or **multi-purpose disinfectant** ensuring sufficient coverage around bowl and under rim.



Swab bowl completely using toilet brush to spread product. Let stand for time specified by product label to allow for disinfection, and flush.



Spray exterior surface of toilet with **bathroom cleaner disinfectant** or **multi-purpose disinfectant**. Wipe with non-abrasive scrub pad or microfiber cloth. Let stand for time specified by product label to allow for disinfection. Wipe all surfaces dry with microfiber cloth.



Using tongs, remove urinal screen. Flush urinal. Apply **toilet bowl cleaner, bathroom cleaner disinfectant** or **multi-purpose disinfectant** ensuring sufficient coverage around bowl.



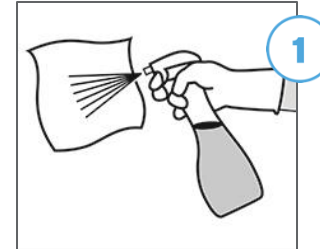
Swab bowl completely using toilet brush to spread product paying attention to under-lip and trap area. Let stand for time specified by product label to allow for disinfection, and flush.



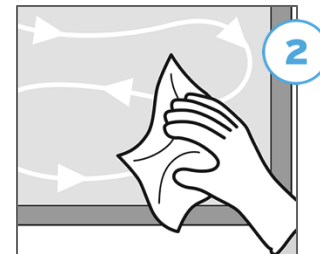
Spray exterior surface of urinal with **bathroom cleaner disinfectant** or **multi-purpose disinfectant**. Wipe with non-abrasive scrub pad or microfiber cloth. Let stand for time specified by product label to allow for disinfection. Wipe all surfaces dry with microfiber cloth. Replace urinal screen.

# RESTROOMS

## Partitions and Walls



1 Spray **multi-purpose disinfectant** on microfiber cloth and wipe stall partitions, doors, latches/locks other high-touch surfaces. Allow proper dwell time per product label to ensure disinfection.



Respray **multi-purpose disinfectant** onto cloth as needed. Spot clean high-touch surfaces ensuring they remain wet for complete contact time indicated on product label.

Beginning at top of stall, wipe surface by moving cloth from left to right and flipping as necessary until surface is dry and streak-free. Alternatively, squeegee surface moving top to bottom.

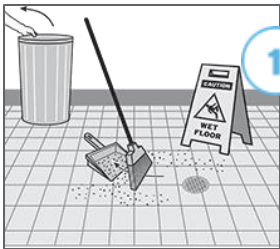


3 Remove graffiti with cloth and **multi-purpose disinfectant**. Report areas that need paint or repair to your supervisor.

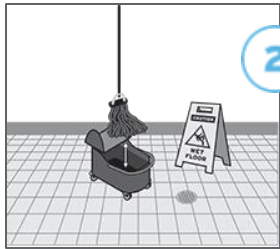


# RESTROOMS

## Floor

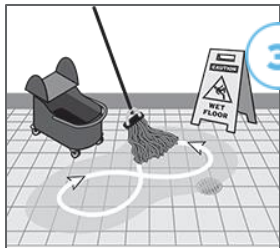


In preparation, add proper dilution of **floor cleaner disinfectant** to mop bucket as indicated on product label. Clear floor of all movable items including garbage bins and floor mats. Wipe up spills and sweep to remove loose soil and debris.

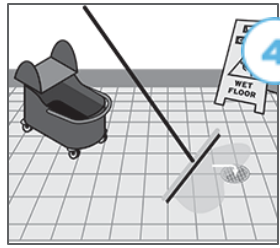


**STOP** Put out 'Wet Floor' sign.

Dip mop into the cleaning solution and wring out well before applying to floor. Use damp mop only. Do not over-wet floor.



Mop in 'figure 8' pattern with overlaps. Flip mop when first side is soiled. Rinse when both sides are soiled. Continue mopping until entire floor is clean. Change solution when soiled.



Mop or squeegee solution toward drain. Allow floor to air dry. Thoroughly clean and store all equipment after use (i.e., hang mop to store, empty dirty cleaning solution into mop sink).

# ENSURE ENVIRONMENTAL HYGIENE

Establish routine cleaning and disinfection inspections in Restrooms...

	Evaluation		Notes
	OK	Needs Attn.	
<b>Floors:</b>			
• Debris-free (trash, gum, hair, etc.)	<input type="checkbox"/>	<input type="checkbox"/>	
• Sanitary seam/grout lines	<input type="checkbox"/>	<input type="checkbox"/>	
• Streaks or stickiness	<input type="checkbox"/>	<input type="checkbox"/>	
<b>Walls and Ceiling:</b>			
• Visual cleanliness	<input type="checkbox"/>	<input type="checkbox"/>	
• Surface cracks	<input type="checkbox"/>	<input type="checkbox"/>	
• Paint condition	<input type="checkbox"/>	<input type="checkbox"/>	
<b>Furniture and Furnishings:</b>			
• Debris and dust-free	<input type="checkbox"/>	<input type="checkbox"/>	
• Soap/paper products/air freshener replenished	<input type="checkbox"/>	<input type="checkbox"/>	
• Toiletries replenished	<input type="checkbox"/>	<input type="checkbox"/>	
<b>Glass and mirrors:</b>			
• Clean and streak-free	<input type="checkbox"/>	<input type="checkbox"/>	

	Evaluation		Notes
	OK	Needs Attn.	
<b>Malodors:</b>			
• Musty, smokey, or unpleasant	<input type="checkbox"/>	<input type="checkbox"/>	
<b>Bathroom:</b>			
• Shower/tub soap scum, scale, streak and mold/mildew-free	<input type="checkbox"/>	<input type="checkbox"/>	
• Toilet/urinal and sinks stain-free	<input type="checkbox"/>	<input type="checkbox"/>	
• Handles/levers/knobs/faucets polished	<input type="checkbox"/>	<input type="checkbox"/>	
• Countertop/vanity spotless and properly maintained (marble, etc.)	<input type="checkbox"/>	<input type="checkbox"/>	
<b>Other:</b>			
• _____	<input type="checkbox"/>	<input type="checkbox"/>	
• _____	<input type="checkbox"/>	<input type="checkbox"/>	
• _____	<input type="checkbox"/>	<input type="checkbox"/>	
• _____	<input type="checkbox"/>	<input type="checkbox"/>	



# LAUNDRY

## General Instructions

### What products do you need?

- Detergent
- Destainer
- Softener
- Sour (as needed)
- Multi-Purpose Disinfectant
- Glass Cleaner
- Floor Cleaner

### What tools do you need?

Linen collection bags, clean and dirty laundry carts, gloves, PPE (refer to SDS)

### Specific touchpoints

- Doorknobs/push plates
- Light switches
- Laundry carts
- Folding tables and shelves
- Washer and dryer controls
- Washer seal/rim and door handle



Cleaning & Disinfection Frequency \_\_\_\_\_

Inspection Frequency \_\_\_\_\_

Responsible \_\_\_\_\_

Required PPE\* \_\_\_\_\_

\*in addition to any required by SDS



**Tip:** To help protect against COVID-19, ensure treated surfaces remain wet for contact time indicated on product label.

*\*Refer to product label for use directions*



**ProGuard**<sup>™</sup>  
SERVICE & SOLUTIONS



**Resuming Operations:  
Commercial Facilities**

# LAUNDRY

## Industrial / Homestyle Laundry Area



### Cleaning and disinfection guidelines

\*Refer to product labels for complete directions for use.

1. Empty trash cans and recycling bins making sure to securely tie-off full bags for transport. Clean and disinfect the outside of trash cans using **multi-purpose disinfectant**. Replace liners.
2. Pre-clean any visibly soiled surfaces (as needed).
3. Clean and disinfect all hard, non-porous surfaces focusing on high-touch surfaces using **multi-purpose disinfectant**. **Ensure treated surfaces remain wet for contact time indicated on product label.**
4. Clean glass and windows using **multi-purpose disinfectant** or **glass cleaner** and a fresh microfiber or squeegee to ensure a streak-free finish.
5. Vacuum or sweep then mop floors with **floor cleaner** as needed.
6. Inspect for quality.



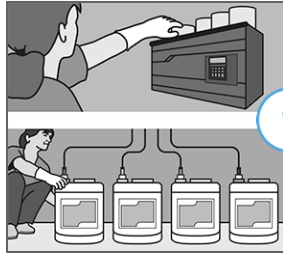
### Specific touchpoints

Doorknobs/push plates, light switches, laundry carts, folding tables and shelves, washer and dryer controls, washing machine rim and door handle, etc.



# LAUNDRY

## Washing



1

Replace products (i.e., **detergent, destainer, softener and sour**) when empty. Check levels frequently to ensure linens come out hygienically clean.



2

**For towels:** Load machine to the top, completely filling wash wheel.



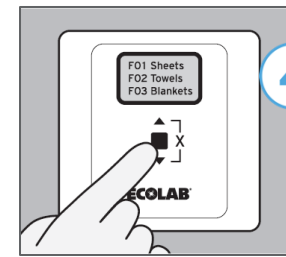
3

**For sheets:** Leave 6"-10" of free space in wash wheel (e.g., two fists free space).



4

Check formula chart to identify the correct wash formula based on linen type.



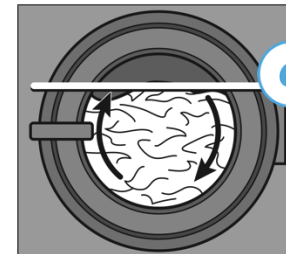
5

Select formula on the controller (if applicable).



6

Select appropriate formula on the washer and push start. Disinfect washer door handle and washer/controller buttons using **multi-purpose disinfectant**.



7

If properly loaded, linen should be at the 10:00 and 2:00 position between rotations.



8

Wearing new gloves, unload clean linens into cart designated for clean laundry only. Dry immediately.



\*Hygienically clean linens are defined as, "free of pathogens in sufficient numbers to cause human illness".<sup>1</sup> This is achieved by washing with ProGuard detergents using traditional high or low temp wash formulas and sufficient drying.

<sup>1</sup>[https://my.aami.org/aamiresources/previewfiles/st65\\_1312\\_preview.pdf](https://my.aami.org/aamiresources/previewfiles/st65_1312_preview.pdf)

# ENSURE ENVIRONMENTAL HYGIENE

Establish routine cleaning and disinfection inspections in the **Laundry Area...**

	Evaluation		Notes
	OK	Needs Attn.	
<b>Floors:</b>			
• Debris-free (e.g., trash, gum, etc.) and vacuumed	<input type="checkbox"/>	<input type="checkbox"/>	
• Sanitary seam/grout lines	<input type="checkbox"/>	<input type="checkbox"/>	
• Streaks or stickiness	<input type="checkbox"/>	<input type="checkbox"/>	
<b>Walls and Ceiling:</b>			
• Visual cleanliness	<input type="checkbox"/>	<input type="checkbox"/>	
• Surface cracks	<input type="checkbox"/>	<input type="checkbox"/>	
• Paint condition	<input type="checkbox"/>	<input type="checkbox"/>	
<b>Furniture:</b>			
• Debris and dust-free	<input type="checkbox"/>	<input type="checkbox"/>	
• Shelves	<input type="checkbox"/>	<input type="checkbox"/>	
• Folding tables	<input type="checkbox"/>	<input type="checkbox"/>	
<b>Glass and mirrors:</b>			
• Clean and streak-free	<input type="checkbox"/>	<input type="checkbox"/>	

	Evaluation		Notes
	OK	Needs Attn.	
<b>Malodors:</b>			
• Musty, smokey, or unpleasant	<input type="checkbox"/>	<input type="checkbox"/>	
<b>Other:</b>			
• _____	<input type="checkbox"/>	<input type="checkbox"/>	
• _____	<input type="checkbox"/>	<input type="checkbox"/>	
• _____	<input type="checkbox"/>	<input type="checkbox"/>	
• _____	<input type="checkbox"/>	<input type="checkbox"/>	
• _____	<input type="checkbox"/>	<input type="checkbox"/>	
• _____	<input type="checkbox"/>	<input type="checkbox"/>	
• _____	<input type="checkbox"/>	<input type="checkbox"/>	
• _____	<input type="checkbox"/>	<input type="checkbox"/>	
• _____	<input type="checkbox"/>	<input type="checkbox"/>	
• _____	<input type="checkbox"/>	<input type="checkbox"/>	
• _____	<input type="checkbox"/>	<input type="checkbox"/>	
• _____	<input type="checkbox"/>	<input type="checkbox"/>	
• _____	<input type="checkbox"/>	<input type="checkbox"/>	



## PROGUARD RESOURCES

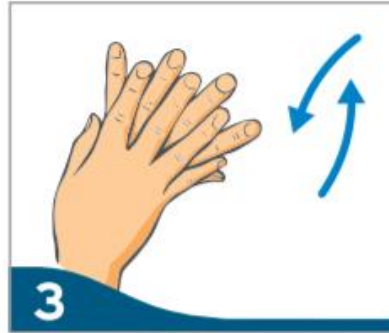
# HAND WASHING TECHNIQUE



Wet hands and apply a sufficient amount of product to your palm.



Rub hands palm to palm to build lather.



Spread lather over the back of each hand with fingers interlaced.



Rub palm to palm with fingers interlaced.



Grip the fingers on each hand and rub in a sideways back and forth movement.



Clasp each thumb in the opposite hand and rotate.



Press fingers into palm of each hand and rotate.



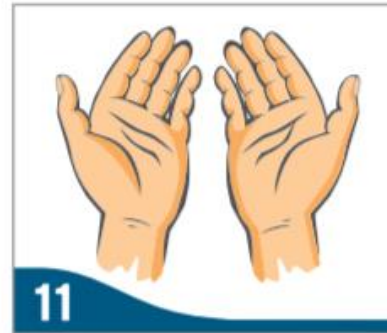
Rinse hands with water.



Dry hands thoroughly with a disposable towel.



Use towel to turn off tap.



Your hands are now clean.



# HAND SANITIZING TECHNIQUE



Apply hand sanitizer to the palm of one hand, covering all surfaces.



Cover whole surface of hands, rubbing palm to palm.



Spread the sanitizer solution over the back of each hand including the wrists with fingers interlaced.



Rub palm to palm with fingers interlaced.



Grip the fingers on each hand and rub in a sideways back and forth movement.



Clasp each thumb in the opposite hand and rotate.



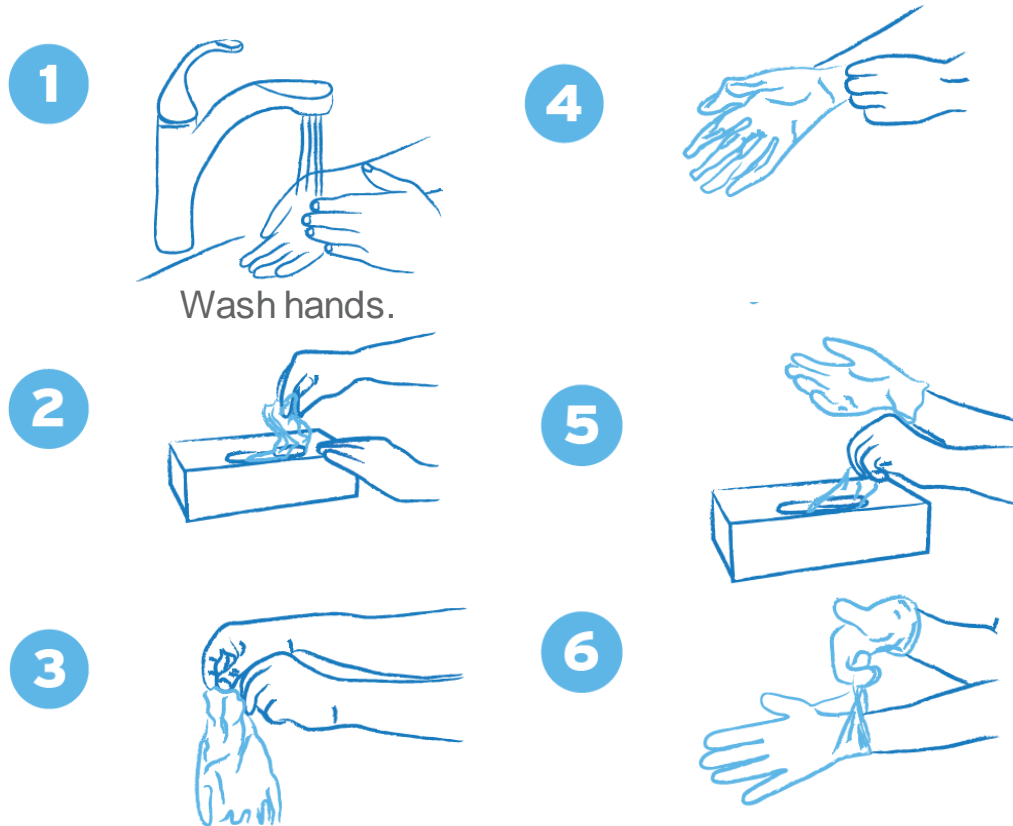
Press fingers into palm of each hand and rotate.



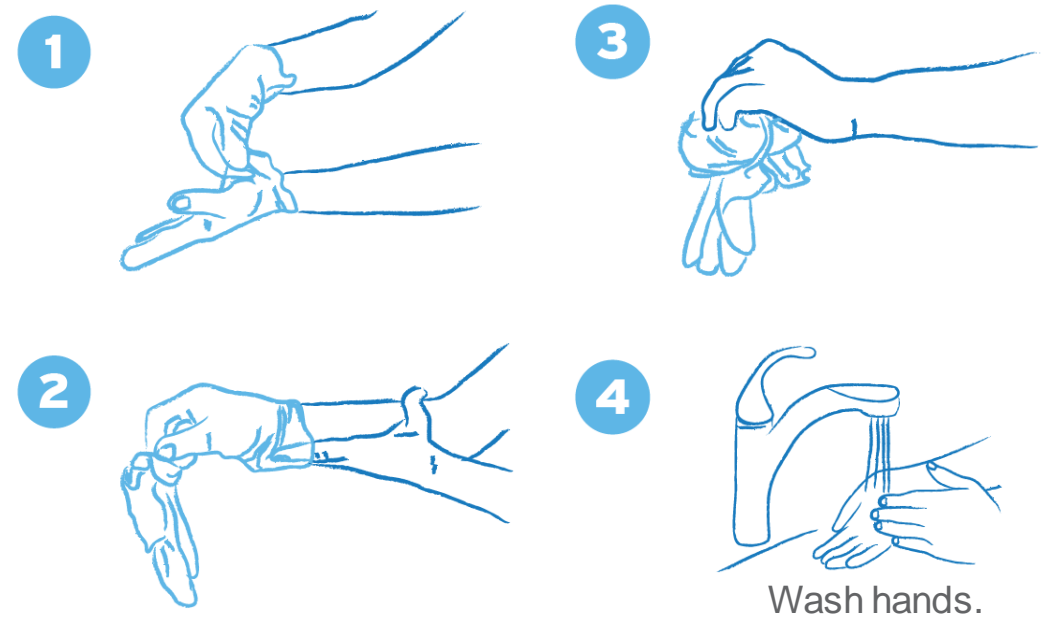
Once dry, your hands are sanitized.

# PROPER GLOVING

## How to **DON** disposable gloves



## How to **REMOVE** disposable gloves





**For more information contact your ProGuard  
Representative at 866-444-7450**